



DYNAMIC™
DOOR SERVICE

marantec

Sectional Door Opener

Comfort 270/280/380

All Marantec operators are engineered and manufactured in Germany to the highest standard to deliver optimum performance, and include quality features as standard to ensure reliable, safe and quiet operating performance year after year.

simply safer



High quality motor (750N)
for doors up to 16.5m²

High quality motor (1000N)
for larger doors up to
18.5m²

Heavy duty motor (1,100N)
designed for cyclone
regions for doors up to 20m²

Door Types: Residential Sectional Doors

Key Benefits



Quality and Adaptability

Marantec garage door openers are manufactured from quality composite material and are approved to the latest world-wide standards including; RCM Accredited (Regulatory Compliance Mark) & European STD DIN/EN 13241-1.



7 Year Warranty

7 year motor warranty, 7 year electronics warranty.



Garage Door Stop Programming

This convenient feature allows for the garage door to be stopped at any height for the purpose of ventilation or pet access.



Motor

Powerful DC motor which means reduced noise and vibration on opening and closing.



Soft Start/Stop Function

Designed to ensure smooth and quiet door operation which is important when the garage is located close to bedrooms or living areas.



LED Courtesy Light

This provides the most convenient way to navigate through your garage environment and get in and out of your car. The light automatically switches on and off as you open and close your garage door.



Transmitter Range

Remote distance: Effective operating range of up to 50m. +4.29 million transmitter code combinations.

Standard Safety Features



Auto Safety Reverse

If an obstruction occurs during closing of the door this function causes the garage door to immediately stop and reverse direction upon contact with the obstruction.



Manual Release

In case of power failure you can simply activate the manual release to open your garage door.



Inbuilt Safety Timer

If optional photo eye beams are installed, the automatic closer timer will ensure that your door will close automatically if you forget to close it yourself.

dynamicsds.com.au | 1300 645 056

marantec
drive technology

Comfort 270



Mechanical Details



Push & pull force: 750N

Door travel speed: Max. 160mm/s



Opening time: Approx 14 sec (door specific)

Kit Components



2 x two channel key ring transmitters and
1 x wall mounted remote



1 x Powerhead & One piece belt C-Rail

Specifications

- 24V DC motor type
- Electrical Input: 240V, 50Hz
- Door weight: up to 165kg
- Door size: up to 16.5m²
- Door height: up to 3.26m
- One piece C-rail with belt drive
- 433 MHz transmitter frequency
- Courtesy light: LED
- Min. headroom: 50mm more than minimum headroom required for door

Comfort 280



Mechanical Details



Push & pull force: 1000N

Door travel speed: Max. 160mm/s



Opening time: Approx 14 sec (door specific)

Kit Components



2 x two channel key ring transmitters and
1 x wall mounted remote



1 x Powerhead & One piece belt C-Rail

Specifications

- 24V DC motor type
- Electrical Input: 240V, 50Hz
- Door weight: up to 200kg
- Door size: up to 18.5m²
- Door height: up to 3.26m
- One piece C-rail with belt drive
- 433 MHz transmitter frequency
- Courtesy light: LED
- Min. headroom: 50mm more than minimum headroom required for door

Comfort 380



Mechanical Details



Push & pull force: 1,100N

Door travel speed: Max. 180mm/s



Opening time: Approx 12 sec (door specific)

Kit Components




2 x two channel key ring transmitters and
1 x wall mounted remote



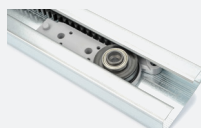
1 x Powerhead & reinforced heavy duty rail

Specifications

- 24V DC motor type
- Electrical Input: 240V, 50Hz
- Door weight up to 220kg
- Door size: up to 20m²
- Door height: up to 3.26m
- One piece C-rail with belt drive
- 433 MHz transmitter frequency
- Courtesy light: LED
- Min. headroom: 50mm more than minimum headroom required for door

 Heavy duty motor (1,100N) designed for cyclone regions for doors up to 20m².

Optional Accessories



Track options

One Piece Belt C-Rail options :

SZ10J- 2m long tilt door rail
SZ11R- doors to 2.25m high
SZ12R- doors to 2.5m high
SZ13R- doors to 3.26m high



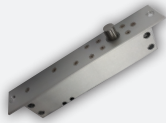
Battery backup

For emergency power supply of the operator systems that is retrofittable.



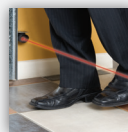
Emergency key release

Used in case of malfunction or power failure, especially useful if there is no other access to the garage.



Automatic Garage Door Deadbolt by Steel-Line

Automatic locking system for your garage door.



'Photo Eye' technology

Allows the garage door to automatically reverse when its sensory light beam is broken by an obstruction, helping to protect your family from injury and your car from damage caused by contact.



Wireless keypad

Weatherproof digital keypad with cover which can be programmed with 4 digit pin code. Includes back-light when used in poor lighting situations.



Extra remote handset & wireless wall mounted remote

Can be installed near an internal access door to your garage giving you greater convenience to open and close your garage door.