



DYNAMIC™ DOOR SERVICE

Sectional Door Opener **SD1000 Pro**

**MORE POWER. MORE FEATURES.
MORE CONFIDENCE.**

**Experience the PRO
difference.**



Powerful

Take your garage to the next level with the new SD1000 Pro Sectional Door motor. We've boosted the power from 800N to a **robust 1000N**, giving smoother, more reliable operation for even the heaviest doors.



Full Compatibility

Now with built-in F-linX Wi-Fi, it's never been easier to control your door remotely or integrate with your smart home setup. The Pro model is also **fully compatible with all wireless accessories** (E-Lock, PE Beams and E-Door Connect), so expanding your system is effortless.



Extended 10 Year Warranty

Enjoy total confidence with an **extended 10 year motor warranty**— performance you can count on.

Key Benefits



Quality Tested

Proven technology coupled with robust design backed up by rigorous quality testing.



Soft Start/Stop Function

Ensures smooth and quiet operation, ideal when the garage is near bedrooms or living areas.



LED Courtesy Light

A convenient way to navigate through your garage environment and get in and out of your car (operates for 9 minutes).



Transmitter Range

Remote distance: Effective operating range of up to 100m. 433.92 MHz transmitter frequency.



Maintenance Reminder

This provides an audible reminder that the garage door is due for a service.

Standard Safety Features



Auto Safety Reverse

If an obstruction is detected while closing, the door will immediately stop and reverse upon contact with the obstruction. Complies with AS/NZ25 60335.2.95.



Auto Sensing Force

During operation the force required is constantly monitored and adjusted to ensure economical operation and reduced wear and tear.



Digital Limit System

Equipped with a digital limit system for ease of programming during installation.



Manual Release

In case of power failure you can simply activate the manual release to open your garage door.

dynamicsds.com.au | 1300 645 056

SD1000 Pro Sectional Door Opener

Kit Components



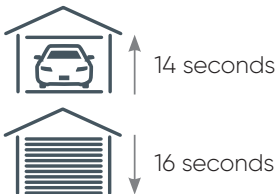
1 x Powerhead & Belt Rail (chain option available),
2 x Four Channel Transmitters, 1 x Wireless Wall Transmitter

Specifications

- Max garage door size: 15m²
- Max door weight up to 150kg doors
- Max peak pulling force: 1000N
- Rolling code technology
- 433.92 MHz transmitter frequency
- Soft start / soft close
- Adjustable operating speed
- Belt drive
- Easy set up & remote coding
- Maintenance alarm
- Reversing system complies with AS/NZS 60335-2-95
- Built in F-inX Wi-Fi

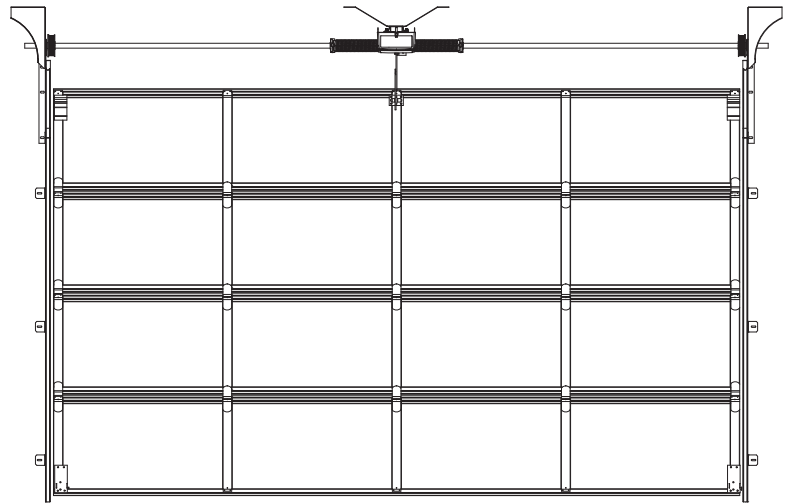
Door Opening and Closing Times

(based on a 2.3m high door)



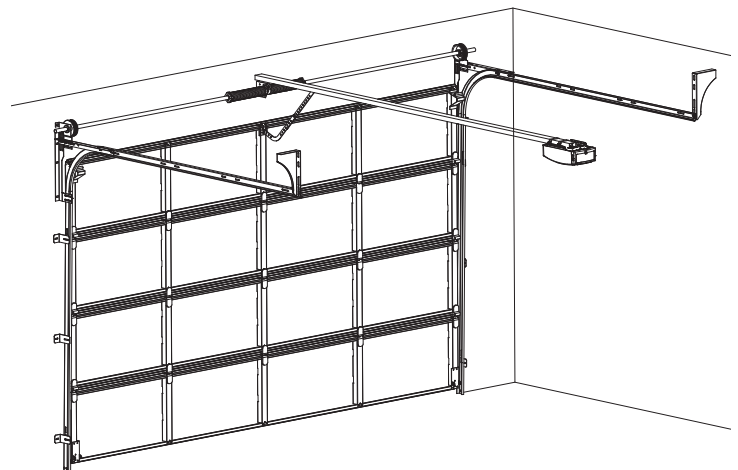
Rail Options

Maximum Door Height	Minimum Operator Clearance
2.4m	3.5m
3.5m	4.5m



Max door height: 3.5m, Max door weight: 150kg, Max door area: 15m²

Typical Installation - Sectional Door



Optional Home Enhancers



E-Lock

The E-Lock enables remote control and status monitoring. When the door is completely closed, the E-Lock automatically locks.

Available as wireless only.



E-Door Connect

The Smarter Garage Door Controller. Unlimited connectivity anywhere and anytime, the E-Door Connect opens up a whole new experience for convenience, safety and accessibility for everyone.



Smart Camera

Add video services to your garage with a Smart Camera. Monitor your garage from anywhere in the world for free.

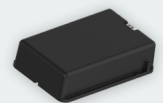
Available as wired only.



PE Beams

Allows the garage door to automatically reverse when its sensory light beam is broken by an obstruction, helping to protect your family from injury and your car from damage caused by contact.

Available as wireless only.



Battery Backup

A Battery back provides an energy supply in the event of a power outage, allowing you to continue operating your garage door.