



**DYNAMIC**<sup>™</sup>  
DOOR SERVICE

## NYLON BRUSH SEALS

### Description

Aluminium extrusion with a nylon brush seal. The nylon brush seal is rated as UL94-V2 and is suitable for use as ember protection and sealing garage doors as per AS3959.

### Key Benefits

Easy to install onto new or existing doors.

### Lengths

Comes in lengths of 2.5 m but can be cut and joined to suit any sized door.

### Fixing Method

Self-drilling screws

### Finishes

Anodised aluminium with black brush filaments.

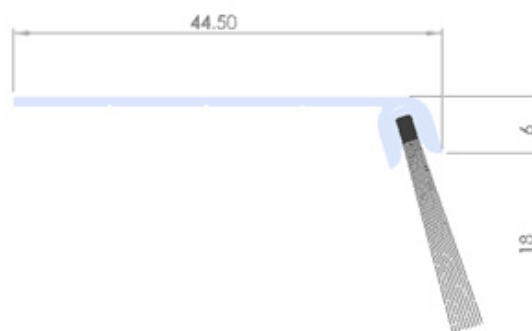
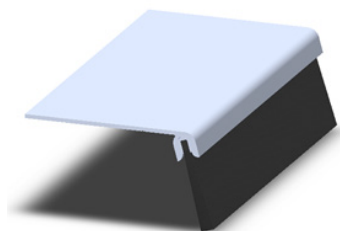


[dynamicds.com.au](https://dynamicds.com.au) | 1300 645 056

**DEFY**  
THE ODDS

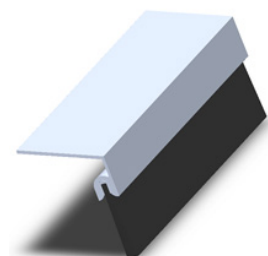
### 10-450-5010

- 18mm Brush
- F Type Aluminium Extrusion
- Attach to jamb and head of sectional doors so that the brush is in contact with the side of the door



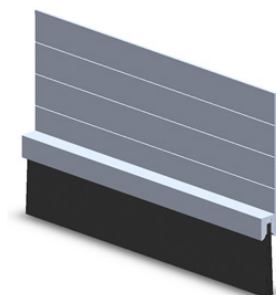
### 20-450-5010

- 30mm Brush
- Y Type Aluminium Extrusion
- Attach to Jamb of opening for roller doors



### 20-450-5015

- 46mm Brush
- H Type Aluminium Extrusion
- Attach to head of opening for roller doors



### 20-450-5020

- 60mm Brush
- Y Type Aluminium Extrusion
- Attach to head of opening for roller doors

